

SPHERO™ Drop Delay Calibration Particles

- Aids in the determination of the drop delay value
- Increases the accuracy and productivity while sorting
- Consists of 2 mL at 1×10^8 particles/mL of a single population of fluorescent particles
- Contains a mixture of fluorophores which allows detection in multiple channel flow cytometers

The SPHERO™ Drop Delay Calibration Particles are fluorescent particles to aid in the determination of the drop delay value for flow cytometer sorters with the appropriate attachment. As a result of using the Drop Delay Calibration Particles and the appropriate attachment, the accuracy and productivity during sorting is enhanced.

Particle Type and Surface	Size, μm	Catalog No.	Unit
Drop Delay Calibration, $10^8/\text{mL}$	6.0-8.0	DDCP-70-2	2 mL

Figure 1 Histograms of Drop Delay Calibration Particles, Cat. No. DDCP-70-2

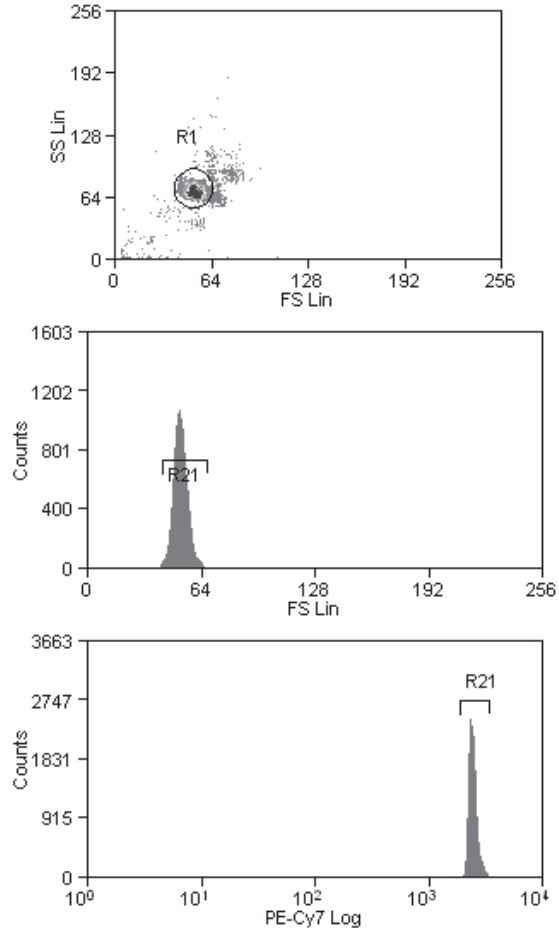


Figure 2 Initial Drop Delay Profile with Spherotech Drop Delay Calibration Particles

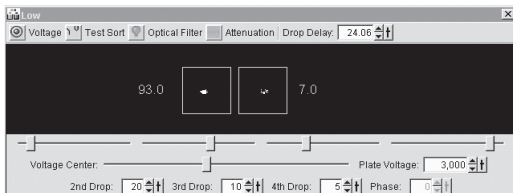


Figure 3 Optimized Drop Delay Profile with Spherotech Drop Delay Calibration Particles

